

POST-EXCAVATION

Since its inception Headland has put a strong emphasis on producing quality post-excavation services, with in-house specialists in palaeoenvironmental analysis, osteoarchaeology, graphics, and finds analysis. Other disciplines are covered by our network of tried and tested experts who are closely managed and well-used to working within the same commercial environment as Headland.

Right from the project design stage our in-house specialists are on hand to help identify the likely implications of fieldwork. They advise field teams on the best ways to protect and preserve a wide variety of remains and on the techniques that will be most appropriate to the site. They also ensure that all sampling strategies are appropriate to the site in question and

that fragile artefacts are carefully retrieved and packaged for transfer to our labs.

A significant benefit of having an in-house post-excavation team is that we can control the post-excavation process more closely, bringing often lengthy projects in on time and on budget.

Headland's experts are well-known in their respective fields and recognised by the likes of Historic England, Historic Environment Scotland and local authority archaeologists. Their reputations provide confidence and reassurance to stakeholders that best-practice is being observed at all times and that the project designs we prepare on behalf of our clients will be approved without delay.

CAPABILITY STATEMENT

Our post-excavation team provides expert opinion on a wide range of more technical areas throughout the life of any archaeological project. We know time is money, and that our clients want expert advice and practical solutions both on and off-site.

POST-EXCAVATION SERVICES

» FINDS ANALYSIS

Our in-house specialists provide a rapid, proactive response, assessing the importance of finds and recommending appropriate methodologies. They cover a wide range of areas, including prehistoric and Roman pottery, medieval to modern pottery, ceramic building materials, metalwork, glass, clay pipe and other small finds. We also draw upon an extensive network of trusted associates, all with particular artefactual specialisms.

» PALAEOENVIRONMENTAL ANALYSIS

Palaeoenvironmental archaeology uses carefully selected recovery techniques to put archaeological sites into their environmental context and provides evidence on such things as diet, economy and living conditions. Our in-house specialisms include archaeobotany and charcoal analysis, sedimentology and faunal, insect and mollusc remains. Where the need arises, we routinely use other specialist associates who are also able to offer analyses of pollen, diatoms, soil micromorphology and a wide range of dating techniques.

» OSTEOARCHAEOLOGY

Our experience in assessing and evaluating sites means that we are best placed to identify at an early stage sites which are likely to contain human burials. Legislation regarding the treatment of human remains differs across the UK and we know how to deal sensitively with human remains and keep

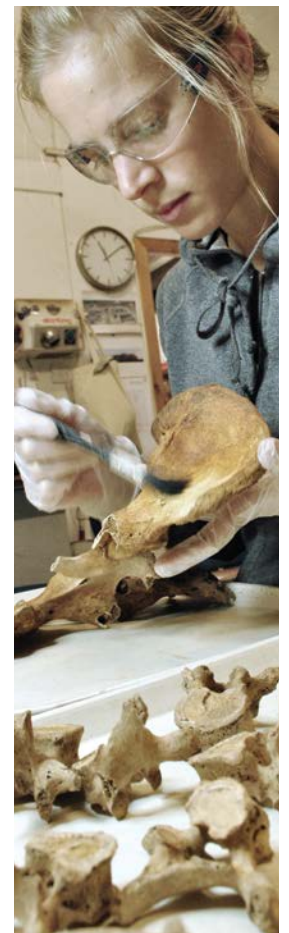
our clients' projects on track. We work to the highest ethical standards and are able to guide clients through the Ministry of Justice licence application process. Our specialists analyse both burial and cremated remains and use a variety of techniques appropriate to the individual projects, including chemical analysis, radiocarbon dating and radiographic analysis.

» GRAPHICS

Our in-house graphics team support projects throughout their lifespan, from pulling together HER and GIS data prior to fieldwork to illustrating and typesetting final reports and publications. Where needed they are also able to use their skills and creativity to present the project and the client in the best possible light, through the production of academic articles, popular booklets, posters and digital resources.

» PUBLICATIONS

Our post-excavation team carries out research, specialist and stratigraphic analysis, a range of illustrations from large-scale site plans to detailed drawings of artefacts, copy-editing, typesetting, and quality control; in short, delivering a total, professional publication service. We have all the skills and contacts necessary to publish our own books, monographs and popular booklets, as well as preparing technical papers for academic journals and other print and digital outputs. We can also produce site information boards, posters, fliers and other material for clients' publicity purposes.



KEY STAFF

ALEX SMITH (HEAD OF POST-EXCAVATION)

Alex has been working in archaeology since completing his PhD in 2000, including over 13 years in the commercial sector and over five years in academic research. In his role as Head of Post-Excavation he manages the overall completion as well as the specialist areas of post-excavation, including finds, graphics and environmental work, across all of our offices and operations. He has a strong research background in Roman archaeology, with many academic publications produced over 18 years. With this experience, Alex is well-placed to be able to assess the research potential of archaeological sites, and to provide the guidance and management needed to deliver the best possible outcomes for all stakeholders involved in the dissemination of Headland's projects.

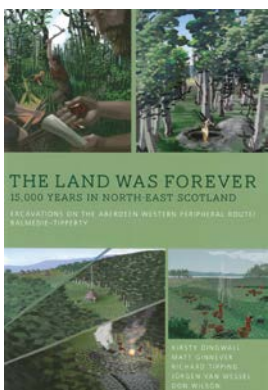
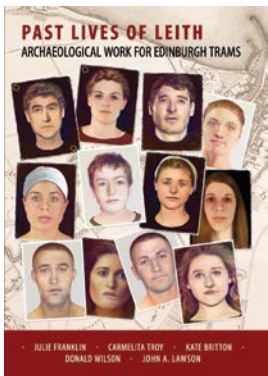
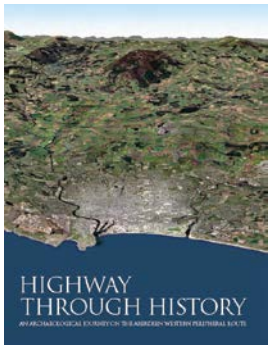
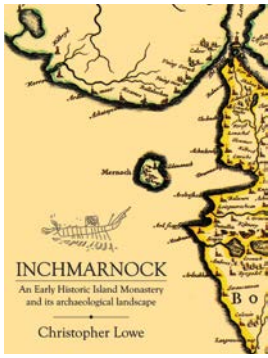


JULIE FRANKLIN (FINDS, ARCHIVES & PUBLICATIONS MANAGER)

Julie has specialised in the analysis and reporting of finds for over 20 years, dealing with site assemblages from southern England to Orkney and Ireland. As well as a wide-ranging knowledge of all types of finds and a broad network of contacts and colleagues, she also has practical skills in finds first aid, conservation, storage, recording, illustration and archiving. She specialises in the study of medieval and post-medieval finds. Her field of expertise encompasses pottery, metalwork, glassware, clay pipes, ceramic building material and other small finds. With her proven written skills, Julie also edits many of Headland's publications. She also helps co-ordinate and tracks progress on Headland's many ongoing post-excavation programmes, dealing with project teams in our regional offices, external specialists and journal editors.

JULIA BASTEK-MICHALSKA (GRAPHICS MANAGER)

With over 14 years' experience in illustration and graphic design, Julia works closely with Project Managers to advise them on the best and most effective way of presenting archaeological data. Over the years, she has become expert in archaeological illustration and developed interest in architectural reconstructions, finds illustrations, photography and typesetting. She combines her archaeological knowledge with high end computer-aided graphics applications, including desktop publishing and mapping software, to produce high quality visual presentations of the past.



SCOTLAND

13 Jane Street
Edinburgh EH6 5HE
0131 467 7705

YORKSHIRE & NORTH

Units 23–25 & 15 | Acorn Business Centre
Balme Road | Cleckheaton BD19 4EZ
0113 387 6430

SOUTH & EAST

Building 68C | Wrest Park | Silsoe
Bedfordshire MK45 4HS
01525 861 578

MIDLANDS & WEST

Unit 1 | Clearview Court | Twyford Rd
Hereford HR2 6JR
01432 364 901

NORTH WEST

Fourways House | 57 Hilton Street
Manchester M1 2EJ
0161 236 2757

HEADLAND
ARCHAEOLOGY

part of the **RSK** Group

www.headlandarchaeology.com